



The Magic Faraway Tree

Bangalore



The Magic Faraway Tree takes its name from the beautiful old tree on the edge of the property on Kanakapura Road, just 200 meters from the NICE corridor and adjacent to the upcoming Metro Station, well connected with Electronics City, Hosur Road, Bannerghatta Road as well as the Industrial areas of Peenya and Bidadi. The property is elevated, with greenery all around, overlooking small hillocks towards the south.

Phase 2 & 2a on the northern side of the property has 2 towers and 1 towers respectively, with our 3 bedroom single level apartment and duplex apartment. All homes are in our very special Blue VRV air conditioning system, kitchen cabinetry with dishwasher, hob and chimney, beds and wardrobes. Each of these homes is also available in our Purple or Green specifications

We have tried to perfect our homes over time to provide a sense of warmth, privacy, openness and tranquillity in an increasingly stressful world. Almost every space opens out onto a landscaped garden, complete with a sprinkler system and drip irrigation system, and large glass panels bring in natural light into the home.

Amenities in the project include a clubhouse with a well-equipped gym, tennis courts, swimming pool along with a toddler's pool, table tennis, children's play area and multipurpose hall.

A commercial block on the western side of the property is planned to be launched in future phases of the project

Our commitment to quality extends well beyond the customization and delivery of your home. We assume responsibility for property maintenance which includes a comprehensive slew of services that ensure competent and timely care of your home.



Master Plan

Phase II

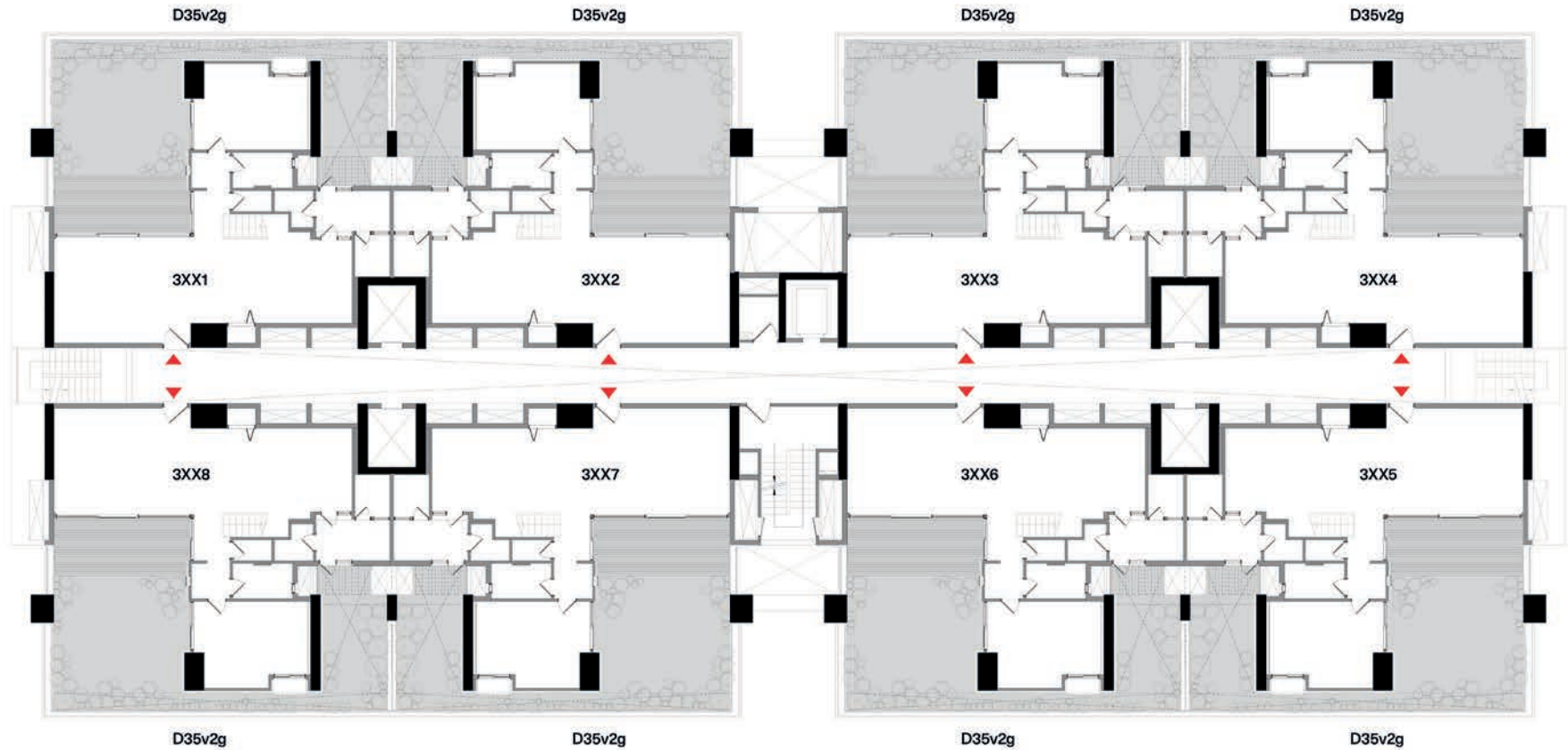


LEGEND

- 01 TOWER 01 - COMPLETED (OC OBTAINED)
- 02 TOWER 02 - (PHASE 2A)
- 03 TOWER 03 - (PHASE 2)
- 04 TOWER 04 - (PHASE 2)
- 05 COMMERCIAL BLOCK / CLUBHOUSE (FUTURE DEVELOPMENT)
- 06 PROPOSED METRO LAND
- MASTER DEVELOPMENT LAND
- - - RESIDENTIAL LAND
- ... PHASE 2
- ... PHASE 2A
- - - ROAD WIDENING

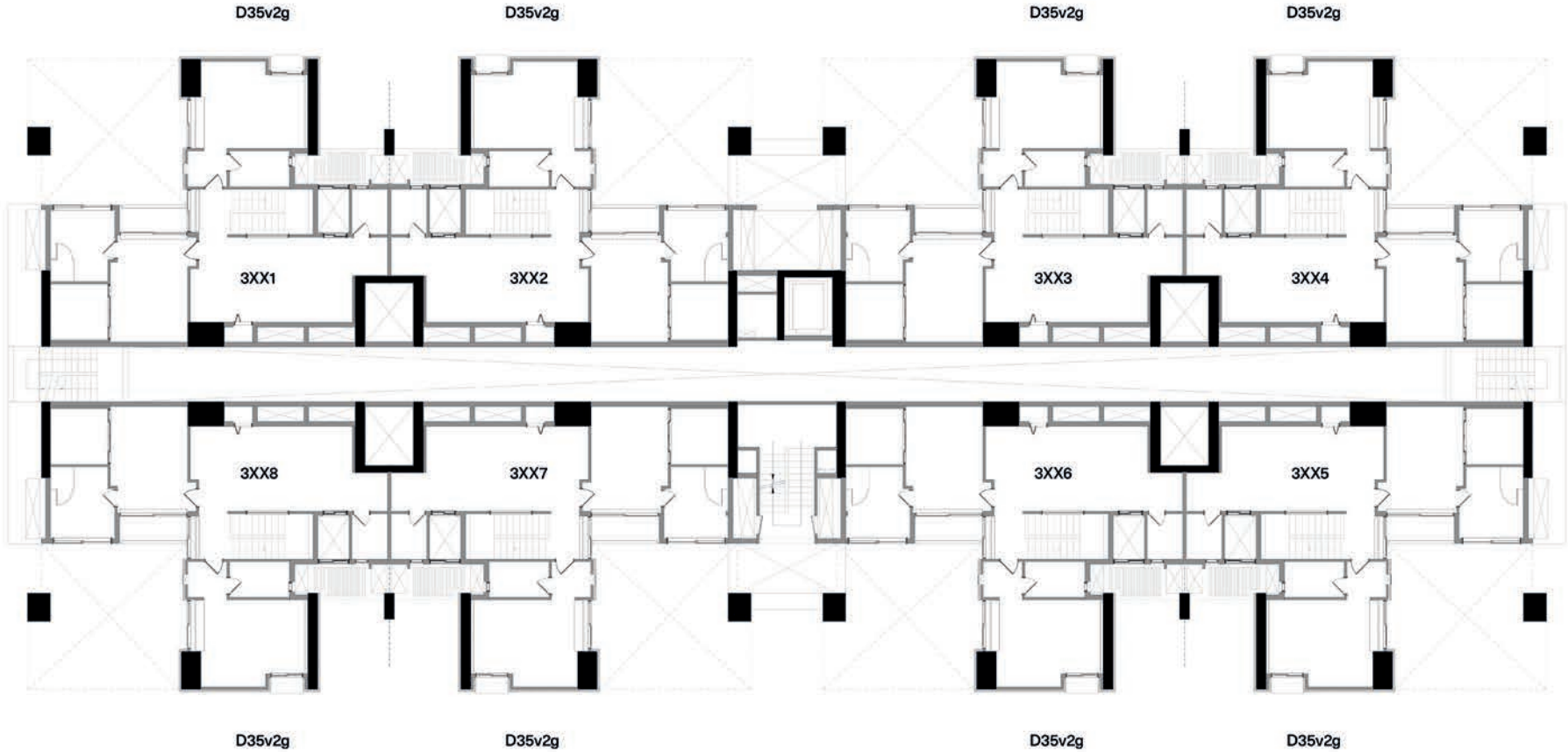
Block Plan

Tower 3 - Level 2



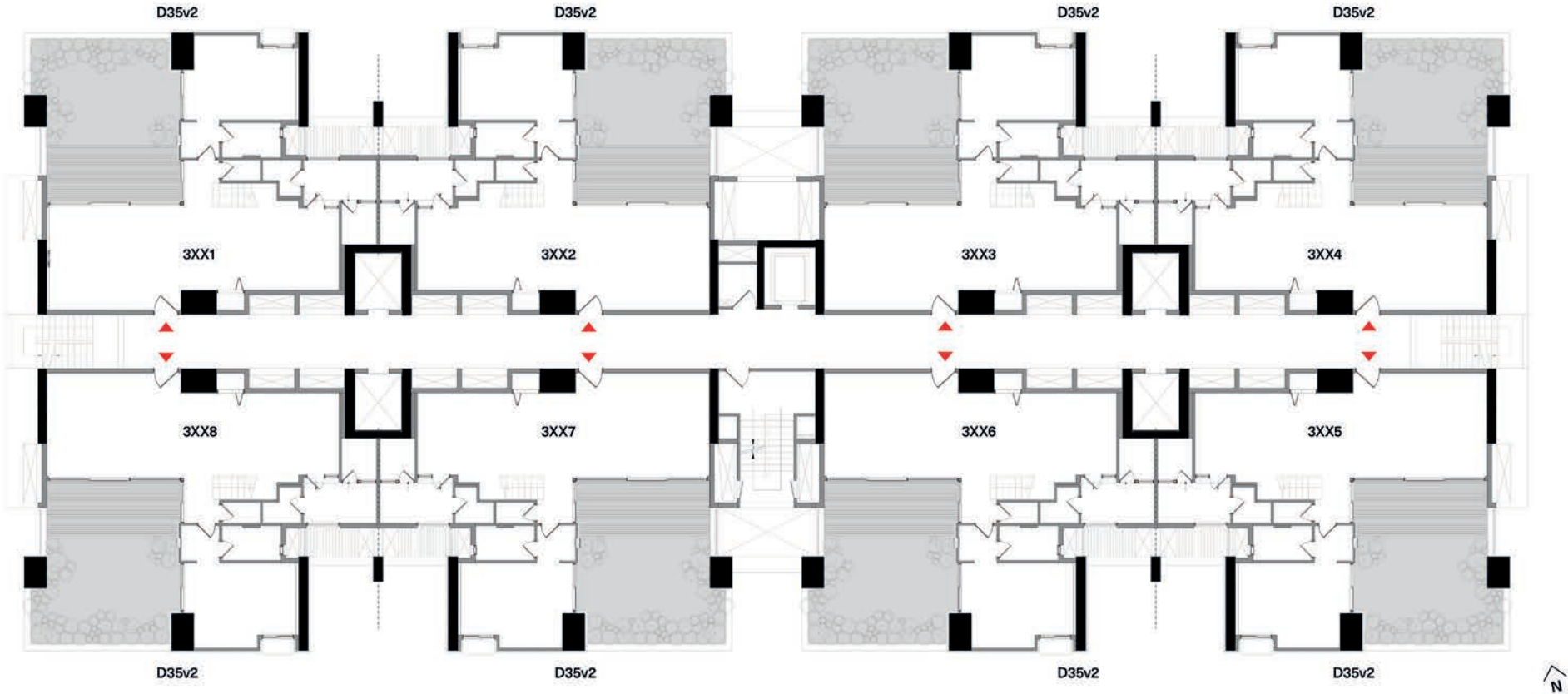
Block Plan

Tower 3 - Level 3



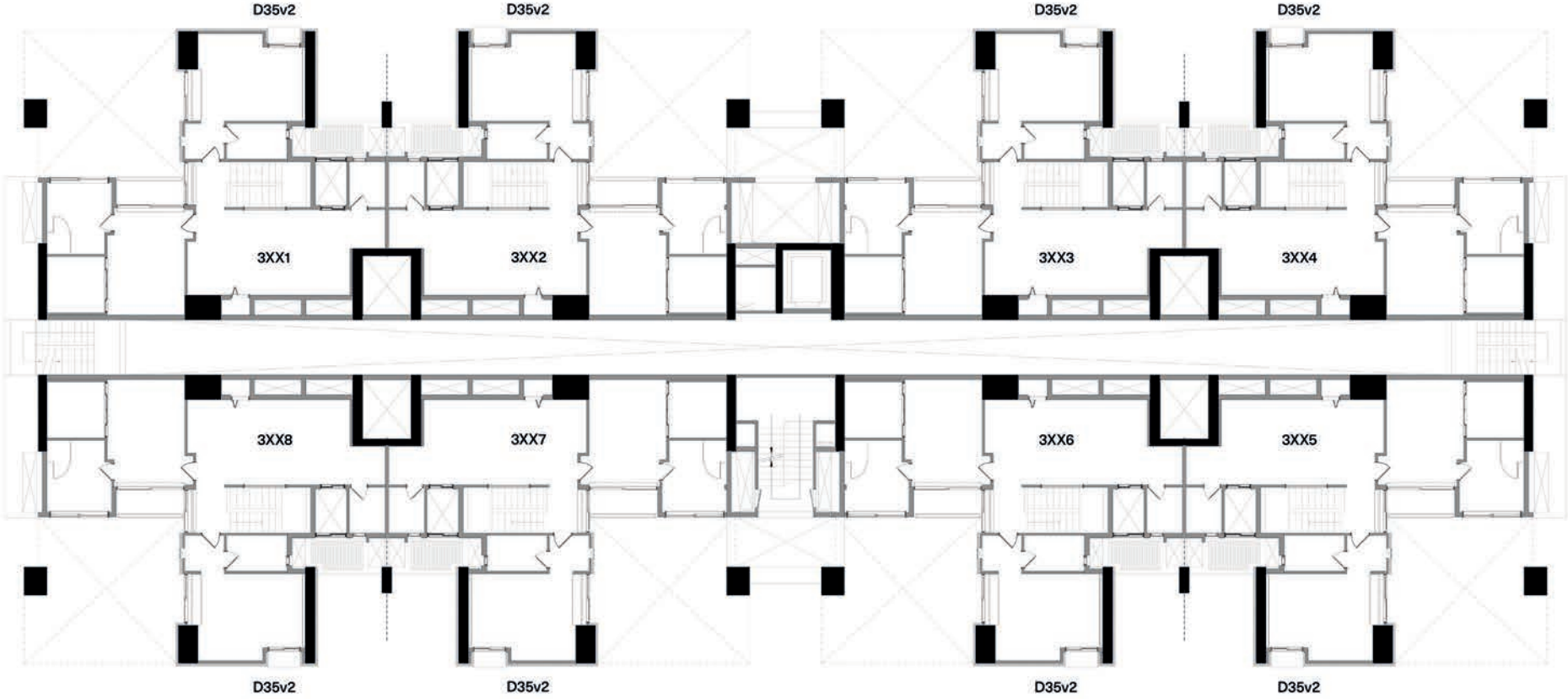
Block Plan

Tower 3 - Typical Lower Level



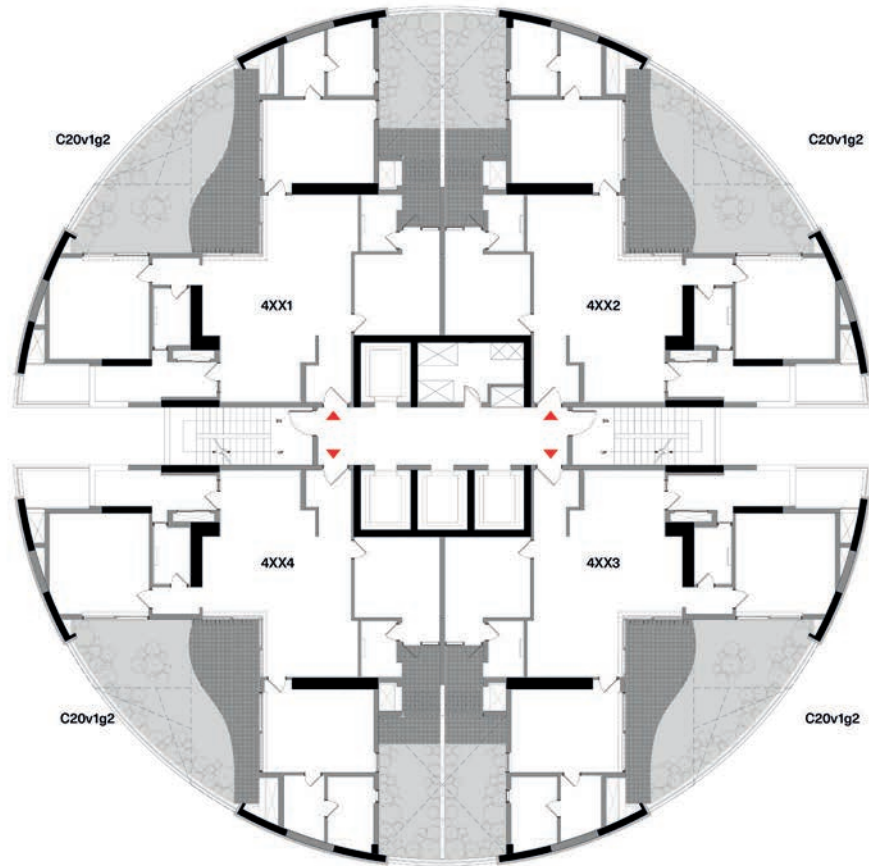
Block Plan

Tower 3 - Typical Upper Level



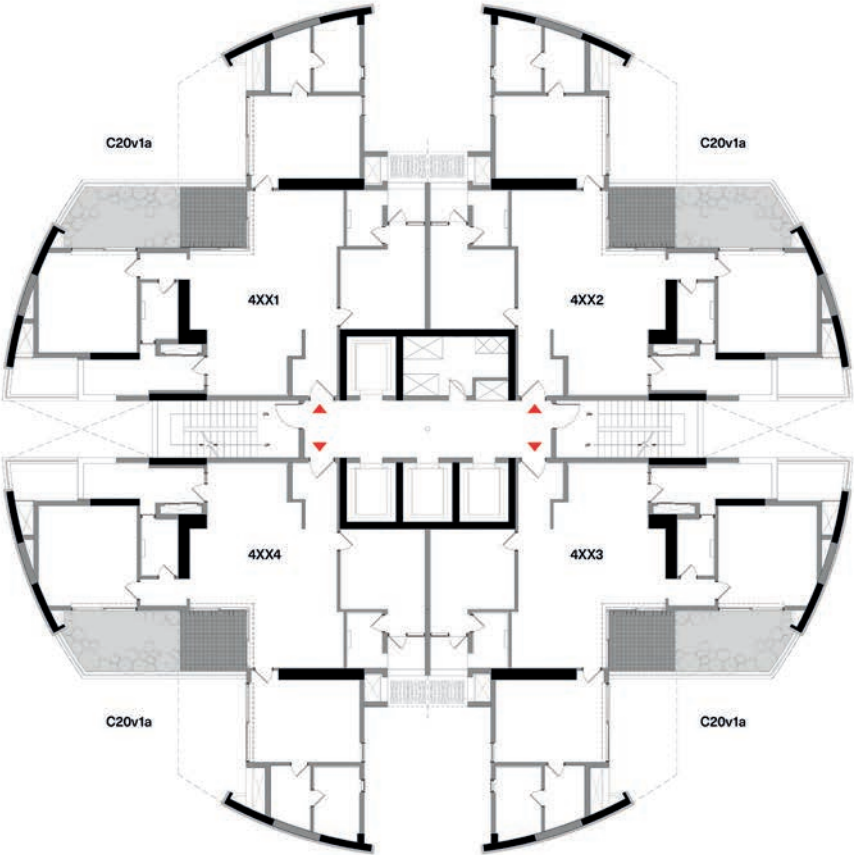
Block Plan

Tower 4 - Ground Level



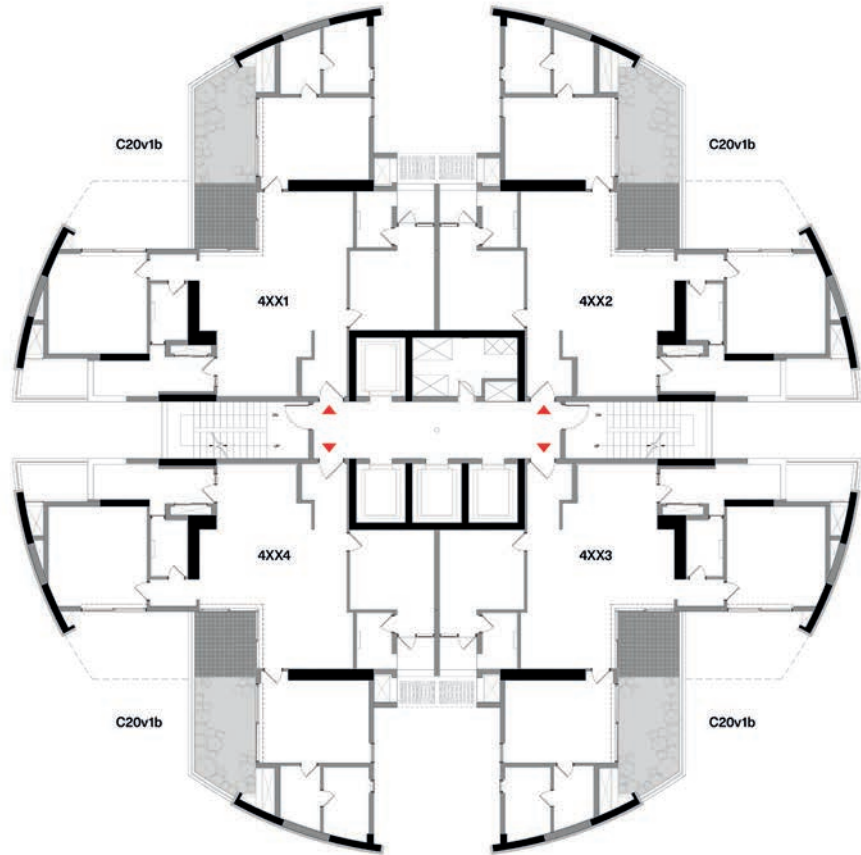
Block Plan

Tower 4 - Typical Even Level



Block Plan

Tower 4 - Typical Odd Level



Location Map

Legend

- Schools
- Hospitals
- Mall
- Recreation
- Park
- Metro Line
- Metro Line

18.3 KM to MG Road
70.4 KM from Bangalore International Airport



Amenities

- Swimming Pool
- Gymnasium
- Billiards / Snooker
- Table Tennis
- Board Games
- Multi-purpose Hall
- Tennis Courts
- Children's Play Area
- Central Greens



Gymnasium



Children's Play Area



Swimming Pool

Fact File

Project

Master Development Land Area	39063 sqm
Residential Development Land Area	29451 sqm
Project Land Area Phase 2	8149 sqm
Total Number of Units in Residential Development	434
Available Products in Project	C20v1a, C20v1b, C20v1g2, D35v2, D35v2g
Approvals Obtained	AIRPORT, BWSSB, BESCOM, FIRE, MOEF, BDA, BBMP, KIADB, BMRC, RERA
RERA Registration Number	PRM/KA/RERA/1251/310/PR/171015/000424
Completion Date for Project	December 2023

Location

Distance from CBD [Km]	18.6 km to MG Road
Distance from Airport [Km]	58.2 km to BIA
Nearest Hospital [Km]	10.6 km to Fortis Hospital
Nearest Good School [Km]	5.6 km to Sri Kumaran Public School
Nearest Upmarket Mall [Km]	11.6 km to Royal Meenakshi Mall
Nearest 5 Star Hotel [Km]	11.8 km to La Marvella



Come, discover our homes.

To book an exclusive tour of our Experience Homes mail us at discover@total-environment.com

www.total-environment.com

TotalEnvironment
Homes